

# Guardian Acuity Equity Fund

Open Ended Growth Fund

2016 June



## Guardian Acuity Asset Management Limited

61, Janadhipathi Mawatha, Colombo, Sri Lanka

Tel: +94112039377, E-mail: info@guardianacuity.com, Website: www.guardianacuity.com

### FUND DESCRIPTION

Guardian Acuity Equity Fund is a growth fund which invests in a diversified portfolio of listed equity securities with the objective of achieving medium to long term capital appreciation. The fund selects equity counters based on a bottom up selection process with a bias towards companies that promise strong growth potential under the prevailing economic conditions.

### FUND PERFORMANCE

Period	GAEF	ASPI	S&P SL 20
2016 June	-3.56%	-4.08%	-3.66%
3 Months	2.48%	3.48%	2.99%
YTD 2016	-8.57%	-8.87%	-8.98%
Since Inception Cum.	56.90%	14.73%	11.66%
Since Inception CAGR	10.93%	4.29%	3.52%

### FUND SNAPSHOT

Inception Date	27th February 2012
Bloomberg Code	GACUEQI: SL
Fund Size	LKR 378.87 Mn
Minimum Investment	LKR 1,000
Unit price (Redemption Price as at 30-06-2016)	LKR 15.69

### FUND FEES

Management Fee*	2.25%
Custodian & Trustee Fee*	0.30%
Exit Fee**	2.00%

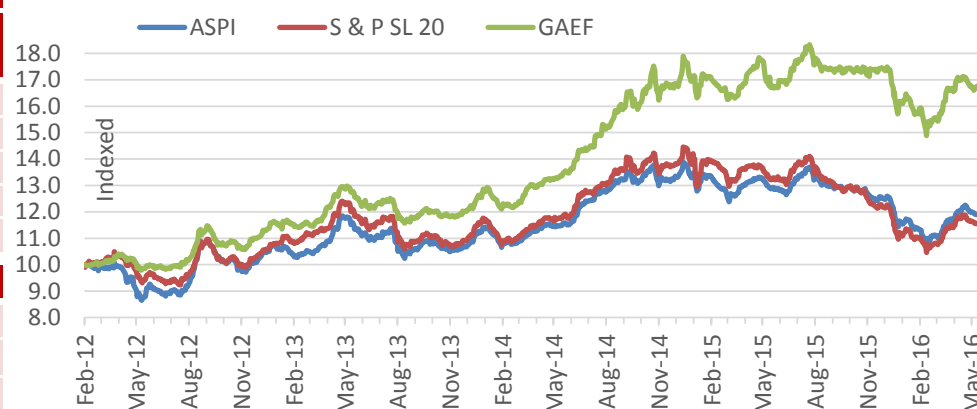
\*As a percentage of NAV

\*\*If withdrawn prior to 1 year

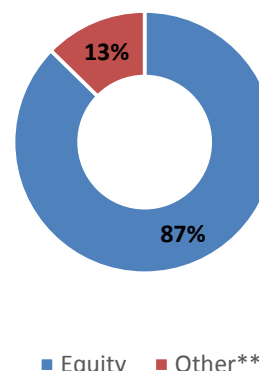
### TOP 5 HOLDINGS

STOCK	% OF NAV
Distilleries Company	8.72%
Sampath Bank	7.40%
Dialog Axiata PLC	5.54%
JKH	4.64%
Ceylinco Insurance PLC	4.46%

### GAEF Vs. Market

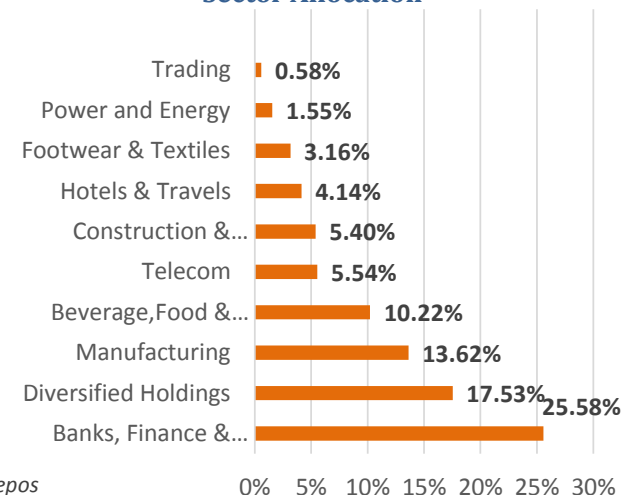


### Asset Allocation



\*\* Includes the value of Overnight Repos

### Sector Allocation



**FUND MANAGER'S COMMENT**

